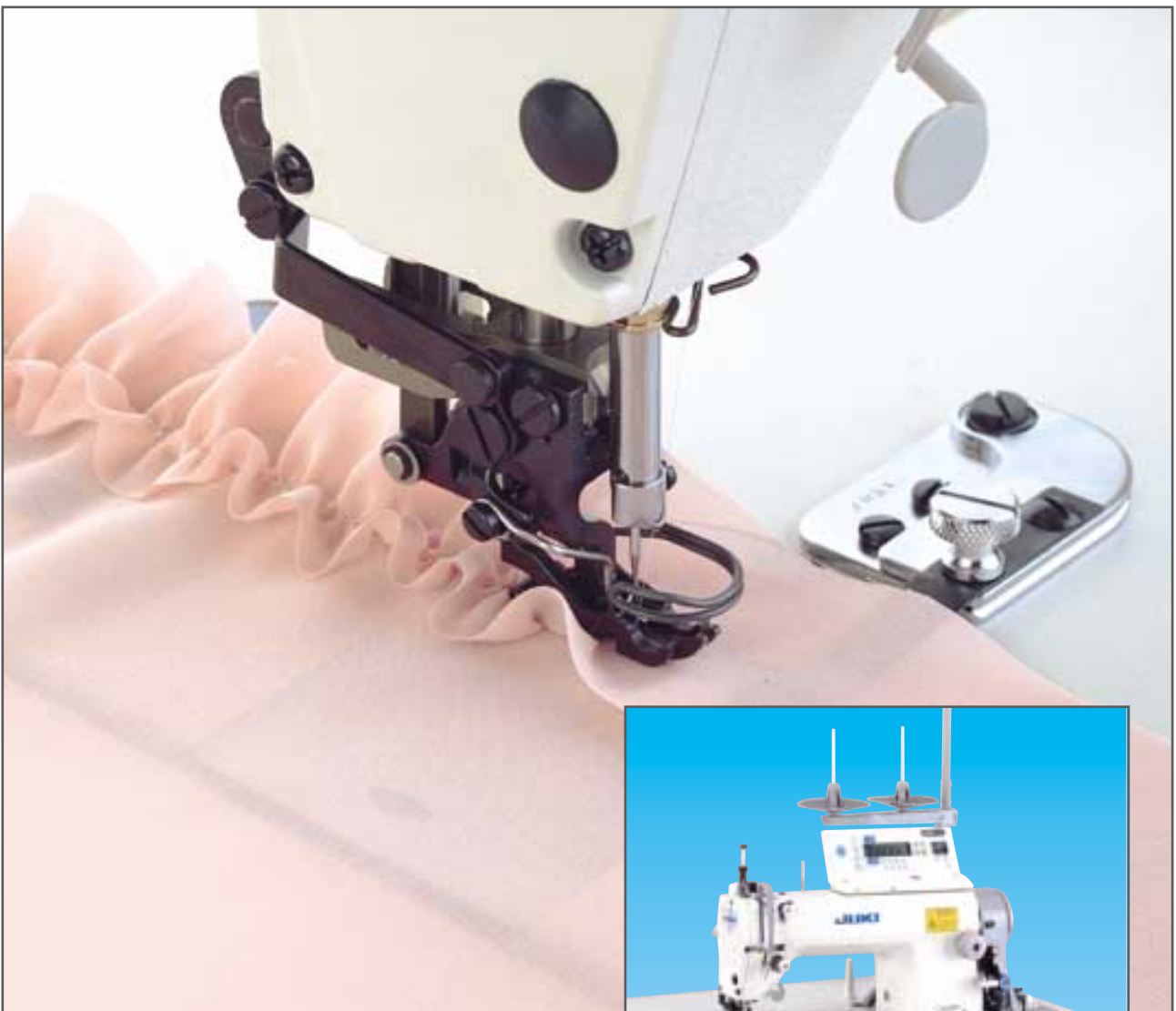


**JUKI®**

1-needle, Bottom & Variable Top-feed Lockstitch Machine

# DLU-5490N DLU-5490N-7

(with an automatic thread trimmer)



● DLU-5490N-7-WB/CP-160

*With its bottom and variable top-feed mechanism, the machine widely adapts to diversified applications and helps promote the production of upgraded-quality products while increasing efficiency.*



With its newly developed servo motor/controller and control panel, the machine promises further upgraded operability, reduced vibration and noise, and higher reliability. Thanks to the built-in variable-top-feed mechanism and optimally designed functions, the machine's operability is dramatically improved. In addition, with its ideal variable-top-feed mechanism, the machine helps reduce dependence on the operator's skill when sewing combinations of different kinds of materials and handling other difficult sewing processes, ensuring the consistent output of beautiful seams. This new, upgraded-quality machine provides not only operating comfort, but also dramatically improved seam quality, further cost reduction, and excellent productivity.

## DLU-5490N

**Model DLU-5490N with greater versatility is also available.**

The DLU-5490N has the same capabilities as the DLU-5490N-7 machine head although it is not provided with automatic thread trimmer.

If you are looking for a high-performance machine head, the DLU-5490N is a right choice.



## FEATURES



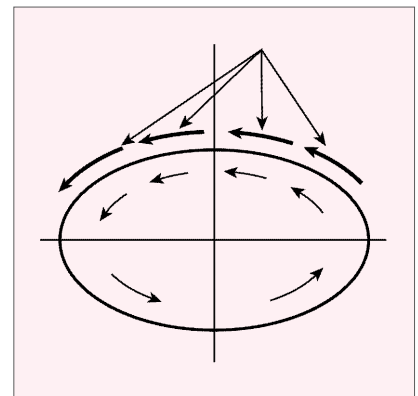
**The partial shirring device permits very easy shirring (PF-6)**

Partial shirring stitches can be produced very easily and quickly while sewing enabling the operator to perform shirring accurately as desired.



**The durability of the walking foot has been dramatically improved.**

The walking foot provides stable feed at all times, assuring high quality. It also eliminates the need for proficiency.



**Ideally balanced top feed and bottom feed**

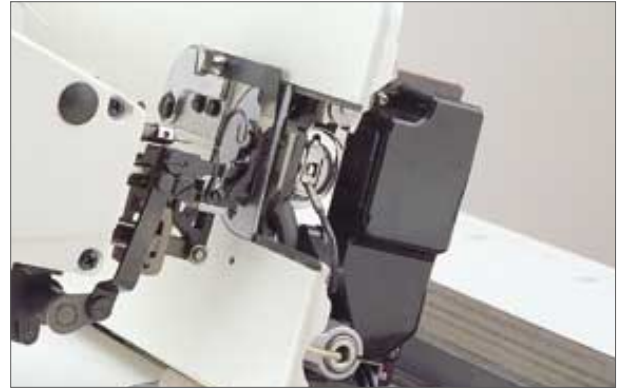
The top feed motion ideally synchronized with the bottom feed motion to uniformly feed the upper and lower cloths, assuring attractive stitches and uniform gathering stitches. This leads to a higher value of finished products.

## OPTIONAL DEVICES



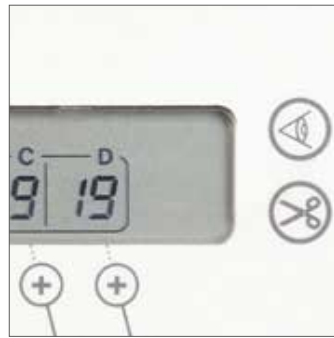
### Auto-lifter

Auto-lifter mounted on the machine head  
AK85 (pedal switch type)



### Remaining bobbin thread detector (AE-4)\*

If the remaining amount of bobbin thread reaches the predetermined set value, the buzzer will sound warn the operator.



### Material edge sensor (ED-2)\*

The sensor detects the material edge, thereby stopping the sewing machine to make it perform thread trimming at once.



### Partial shirring device (PF-6)

\* To install the servo-motor/controller and control panel to the machine after set-up, optional unit (A) will be necessary (separately available).

## FEATURES



### The maximum top feed amount is 8mm

The top feed amount has been increased to assure stable gathering stitches.



### Consistent thread trimming mechanism

The moving knife has been designed so that it can be easily replaced, thus facilitating machine maintenance.



### The maximum lift of the presser foot is 13mm.

The large lift of the presser foot enables the operator to easily set or remove materials and sew overlapping sections without any difficulty.

# NEW-GENERATION SERVOMOTOR/ CONTROLLER

## SC-800



**Light-weight monolithic configuration with a built-in motor**

The introduction of a compact AC servo motor reduces the total weight of the machine and helps reduce vibration and noise during operation. The controller is completely shielded by an aluminum frame to absorb external impacts such as static electricity.

**Comfortable operation is ensured by quick-start and quick-stop function.**

The servo motor starts up and stops with high speed and extreme accuracy. With its proven reliability and quality, the machine delivers further upgraded efficiency and comfort in operation.

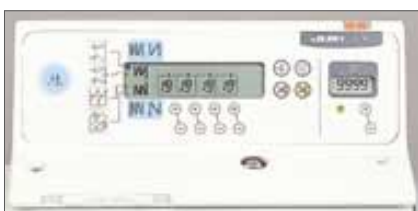
## CONTROL PANEL

**Improved functions can be selected using the control panel to suit the machine's specification and the processes in which it is to be used.**

A series of functions has been developed to allow the operator to make a choice on the panel in accordance with the process in which the sewing machine is to be used. The control panel is provided with many different kinds of functions, which means that it can respond to any sewing need.



● CP-60



● CP-160



● CP-360

## ■ CONTROL PANEL SPECIFICATIONS

No.	Function	Pictograph	CP-60	CP-160	CP-360
1	Power indicator lamp (LED)		●	●	●
2	Max. speed limitation variable resistor		●	●	●
3	Thread trimming prohibition switch		▲	●	●
4	Soft-start		▲	▲	▲
5	Automatic count back		▲	▲	▲
6	Material edge sensor ON/OFF switch		**	**	**
7	Function of detecting the remaining amount of bobbin thread			*	*
8	Automatic thread trimming switch			●	●
9	Back tack pattern switch			●	●
10	Overlapped stitching pattern switch			●	●
11	Bobbin thread counter			●	●
12	Needle up/down compensating switch			●	●
13	One-shot automatic stitching switch			●	●
14	Double back tack switch			●	●
15	Key lock			●	●
16	Constant-dimension stitching pattern			●	●
17	Programmable seam length			●	●
18	Production counter				●
19	Programmed stitching pattern				●
20	Combined stitching pattern switch				●
21	Re-sewing switch				●
22	Teaching switch				●
23	Presser foot lifting time setting switch				●

● Designated on the control box.

\* ● Operative when the machine is equipped with a remaining bobbin thread detector (AE: optional).

\*\* ● Operative when the machine is equipped with a material edge sensor (ED: optional).

## ■ WHEN YOU PLACE ORDERS

Please note when placing orders, that the model name should be written as follows:

**DLU-5490N** [ ] [ ]  
**DLU-5490N** [ ] [ ] **-7-** [ ] [ ] [ ] [ ]

Application	Code
For light-weight materials	<b>BA</b>
For medium-weight materials	<b>BB</b>
For heavy-weight materials	<b>BC</b>
For edge welt seam topstitching	<b>C</b>
To prevent it from catching materials	<b>CG</b>
For sewing sharp curves	<b>D</b>
For elastic materials	<b>E</b>
For setting zipper (right)	<b>J</b>
For binding	<b>L*</b>
For bottom hemming	<b>M*</b>
For piping	<b>N*</b>
For zipper attaching (left)	<b>P</b>
For preventing puckering	<b>S</b>

Wiper and automatic reverse feed function		
Wiper	Automatic reverse feed function	Code
Not provided	Provided	<b>0B</b>
Provided	Provided	<b>WB</b>

Auto-lifter (optional)	Code
Not provided	
Provided (AK85)	<b>AK</b>

\* Note ● When using the gauges L, M & N, attach them to the binder, etc. Since the prices are separate, please ask us of them.  
 ● Various gauges other than those shown are also available.

## ● PSC box/control panel/motor for SC

**SC800-** [ ] [ ] [ ] **D-** [ ] [ ] [ ] **A**

PSC box				Code
For General Export	Single-phase 220V	* PFL	Japanese, English, Chinese	<b>07</b>
			English, German, French, Spanish, Italy	<b>08</b>
	3-phase 220V	* PFL	Japanese, English, Chinese	<b>11</b>
			English, German, French, Spanish, Italy	<b>12</b>
For CE	Single-phase 230V	* PFL	English, German, French, Spanish, Italy	<b>34</b>
** For JUS (LA)	Single-phase 120V	* PFL	English, German, French, Spanish, Italy	<b>37</b>
	3-phase 220V	* PFL	English, German, French, Spanish, Italy	<b>38</b>

Control box	Code
Standard	<b>S</b>
Optional unit A (for the ED-2 and the AE-4)	<b>A</b>

Control panel	Code
CP-60	<b>060</b>
CP-160	<b>160</b>
CP-360	<b>360</b>

Pulley belt	Code
Lockstitch for general fabric	<b>D</b>

\* If an auto-lifter is installed on the machine, the presser foot will be lifted/lowered by the foot pedal.  
 \*\* JUS: North America and Central and South America.

## ■ SPECIFICATIONS

Model name	DLU-5490N	DLU-5490N-7
Max. sewing speed	4,500rpm	
Max. stitch length	5mm	
Max. top-feed amount	8mm	
Needle bar stroke	30.7mm	
Lift of the presser foot	By hand: 5.5mm, By knee: 13mm	
Needle (at the time of delivery)	DB x 1 (#14), For JE: 134 (Nm90)	
Hook	Automatic-lubricating full-rotary hook	
Lubrication	Automatic	
Lubricating oil	JUKI New Defrix Oil No.1 (equivalent to ISO VG7)	
Automatic reverse feed function		Provided as standard
Power requirement		Single-phase 100 ~ 120V, 200 ~ 240V 3-phase 200 ~ 240V
Power consumption		Power rating 400VA
Weight	Machine head: 30kg	Total weight: 83kg

● To order, please contact your nearest JUKI distributor.

**JUKI**<sup>®</sup>  
**JUKI CORPORATION**  
 INTERNATIONAL SALES H.Q.

8-2-1, KOKURYO-CHO, CHOFU-SHI,  
 TOKYO 182-8655, JAPAN  
 PHONE : (81) 3-3430-4001 ~ 4  
 FAX : (81) 3-3430-4909.4914  
 TELEX : J22967  
<http://www.juki.co.jp>

\* Specifications and appearance are subject to change without prior notice for improvement.  
 \* Read the instruction manual before putting the machine into service to ensure safety.